

TYPE UZC 600 A LIST OF SPARE PARTS

CONTENTS	A. UZC sizes 200, 250, 350, 380, 550 (with bakelite board)	Page 2, 3
	B. Body, contacts, transition resistor	" 4, 5
	C. Gaskets	" 6, 7
	D. Contact details and shafts	" 8, 9
	E. Accessories (Relay, filters, vents)	" 10, 11
	F. UZC size 200, 250 kV with steel board	" 12, 13
	G. Gaskets for do.	" 14, 15
	H. Accessories for do.	" 16, 17
	J. Recommended set of spare parts These details only are available in stock. Other details to be manufactured after ordering.	" 17

IMPORTANT:

At ordering please state type designation and serial number of the on-load tap-changer, which are to be found on the rating plate.

This document must not be copied without our written permission, and the contents thereof must not be passed to a third party or be used for any unauthorized purpose. Contravention will be prosecuted. ABB Components AB

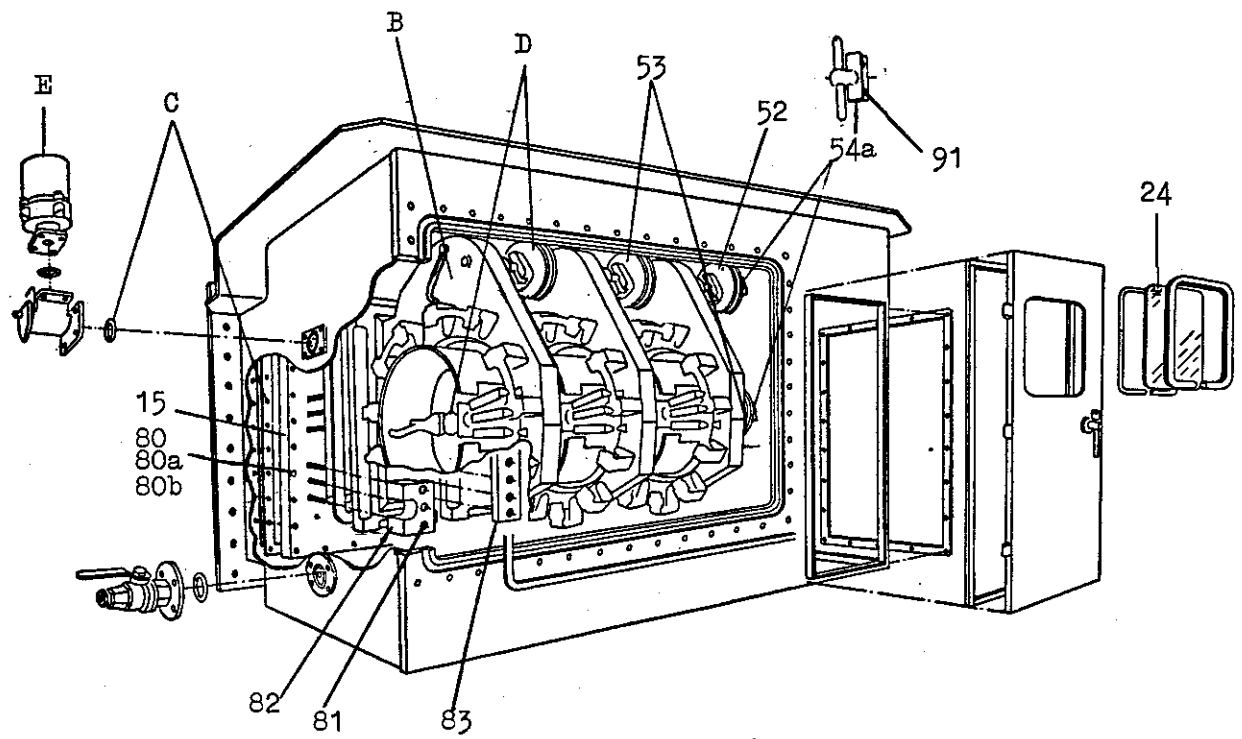


Fig. 1

A. UZC 200, 250, 350, 380, 550 KV (WITH BAKELITE BOARD)

Item No.	Fig.	Name of item	Quantity per		Remark	Price code		
			tap ch	phase		200, 250	350, 380	550 kV
B	1	Body, contacts etc.	3	1	See page 4, 5			
C		Gaskets	1		"- 6, 7			
D		Contact details, shafts	1		"- 8, 9			
E		Accessories	1		"- 10, 11			
15		Bakelite board	1			R 433	R 434	R 435
24		Window pane	1			R 448	R 448	R 448
52		Insulating shaft			See page 9			
53		"-			"-			
54 a		Coupling			"-			
80		Nut for item 15	44			R 517	-	-
		"-	54			-	R 517	-
		"-	64			-	-	R 517
80 a		Spring washer	44			R 518	-	-
		"-	54			-	R 518	-
		"-	64			-	-	R 518
80 b		Washer	44			R 519	-	-
		"-	54			-	R 519	-
		"-	64			-	-	R 519
81		Nut for body item B	58			R 520	-	-
81		"-	72			-	R 520	R 520
82		Bracket for body	12			R 521	-	-
82		"-	24			-	R 521	R 521
83		"-	2			R 522	-	-
91		Screw			See page 9			
					"-			

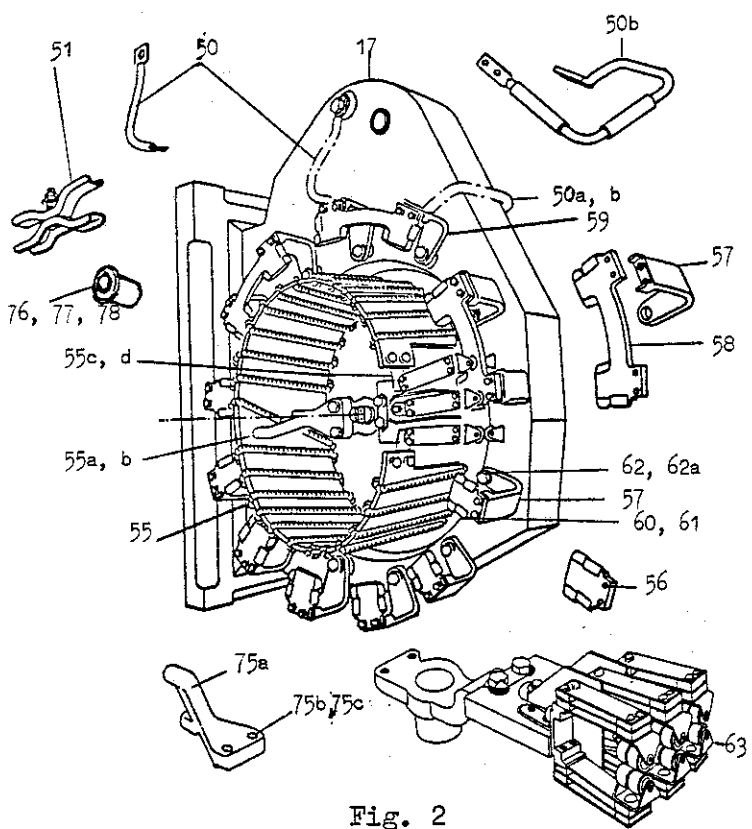


Fig. 2

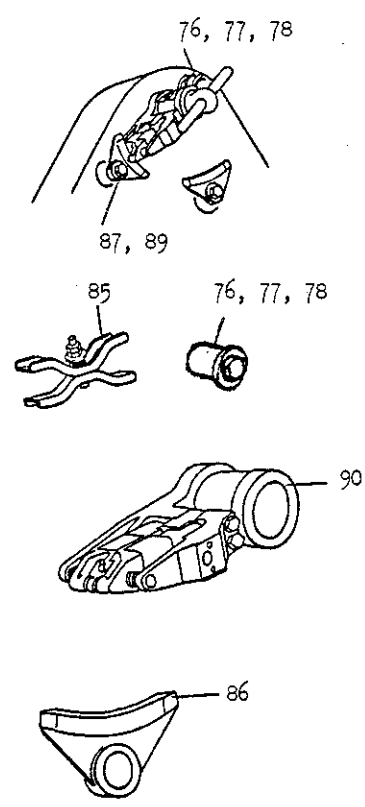


Fig. 3

Number of positions	Quantity per phase											
	Item 56			Item 57			Item 58		Item 59		Item 60, 61	
	UZCL.	UZCR.	UZCD.	UZCL.	UZCR.	UZCD.	UZCR.	UZCD.	UZCR.	UZCD.	UZCL.	UZCD. UZCR.
7	7			7							14	
9	9			9							18	
11	11			11							22	
13		3	1		12	12	5	6	1	1		26
15		5	3		12	12	4	5	1	1		26
17		7	5		12	12	3	4	1	1		26
19		7	7		12	12	3	3	1	1		26
21		11	9		12	12	1	2	1	1		26
23		11	11		12	12	1	1	1	1		26

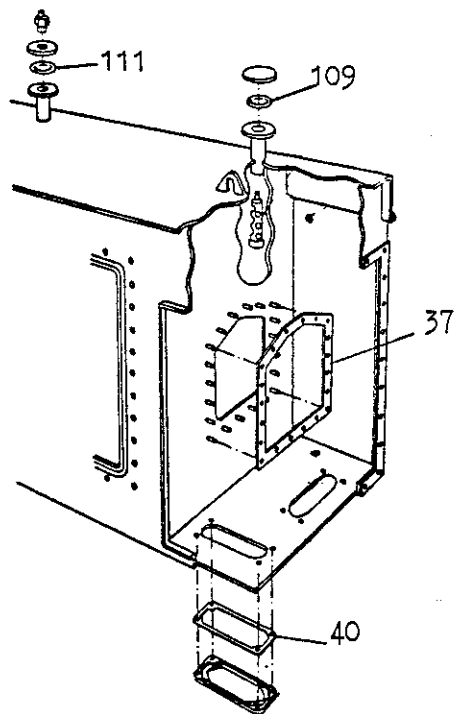
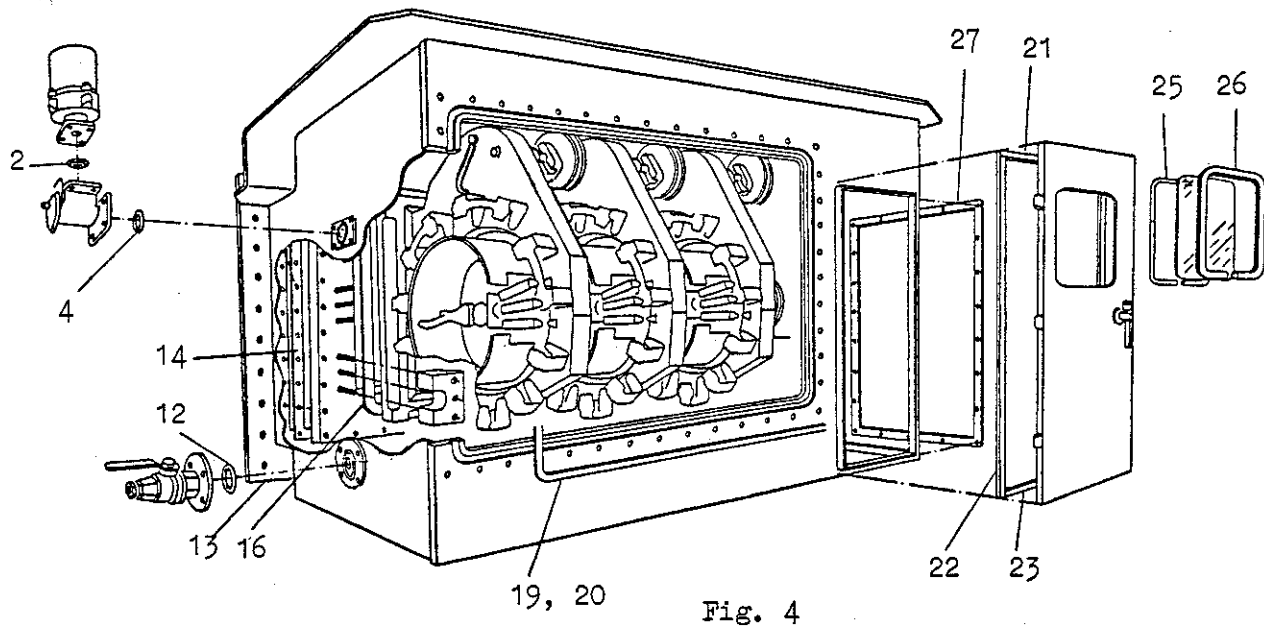
B. BODY, CONTACTS, TRANSITION RESISTOR

Item No.	Fig.	Name of item	Quantity per		Remark	Price code		
			tap	ch phase		200, 250	350, 380	550 kV
17	2	Body	3	1	UZCL.	R 437	R 437	R 437
17		"	3	1	UZCR., UZCD.	R 438	R 438	R 438
50		Conductor	3	1	UZCR.	R 464	R 464	R 464
50 a		"	3	1	UZCD.	R 465	R 465	R 465
50 b		"	3	1	UZCD.	R 466	R 466	R 466
51		Current collector	6	2		R 467	R 467	R 467
55		Transition resistor	3	1		R 481	R 481	R 481
55 a		Screw for do.	6	2		R 482	R 482	R 482
55 b		Spring washer for do.	6	2		R 483	R 483	R 483
55 c		Nut for do.	6	2		R 484	R 484	R 484
55 d		Spring washer for do.	6	2		R 485	R 485	R 485
56		Fixed contact	1) See table page 4			R 486	R 486	R 486
57		Contact support				R 487	R 487	R 487
58		Fixed contact				R 488	R 488	R 488
59		Contact support				R 489	R 489	R 489
60		Screw				R 490	R 490	R 490
61		Spring washer				R 491	R 491	R 491
62		Screw		2)		R 492	R 492	R 492
62 a		Spring washer		2)		R 493	R 493	R 493
63		Moving contact arm	3	1	Complete (For details see fig. 6)	R 494	R 494	R 494
75 a		Tail	3	1		R 511	R 511	R 511
75 b		Screw for do.	6	2		R 512	R 512	R 512
75 c		Spring washer for do.	6	2		R 513	R 513	R 513
76	2, 3	Contact tube	6 (3)	2 (1)	3)	R 514	R 514	R 514
77		Screw for do.	6 (3)	2 (1)	3)	R 515	R 515	R 515
78		Spring washer for do.	6 (3)	2 (1)	3)	R 516	R 516	R 516
85	3	Current collector	6	2	UZCR., D.	R 523	R 523	R 523
86		Fixed contact	6	2		R 524	R 524	R 524
87		Screw for do.	6	2		R 525	R 525	R 525
89		Spring washer for do.	6	2		R 526	R 526	R 526
90		Moving contact	3	1		R 527	R 527	R 527

1) 3 x the quantity per phase

2) $\frac{1}{2}$ x the quantity for item 60, 61

3) Quantity () for UZCL.



C. GASKETS

Item No.	Fig.	Name of item	Quantity per		Remark	Price code		
			tap ch	phase		200, 250	350, 380	550 kV
2	4	Gasket for pressure r.	1			R 411	R 411	R 411
4		"- testing v.	1			R 413	R 413	R 413
12		"- bottom v.	1			R 426	R 426	R 426
13		"- flange	1			R 427	R 428	R 429
14		"- bak board	1			R 430	R 431	R 432
16		"- body	3			R 436	R 436	R 436
19		"- cover	1		plane gasket	R 439	R 440	R 441
20		"-	1		slot gasket	R 442	R 443	R 444
21		"- door	1			R 445	R 445	R 445
22		"-	2			R 446	R 446	R 446
23		"-	1			R 447	R 447	R 447
25		"- window	1			R 449	R 449	R 449
26		"-	1			R 450	R 450	R 450
27		"- cover	1			R 451	R 451	R 451
37	5	"- motor drive	1			R 461	R 461	R 461
40		"- cover	2			R 462	R 462	R 462
109		"- flange	1			R 540	R 540	R 540
111		"-	1			- 542	R 542	R 542

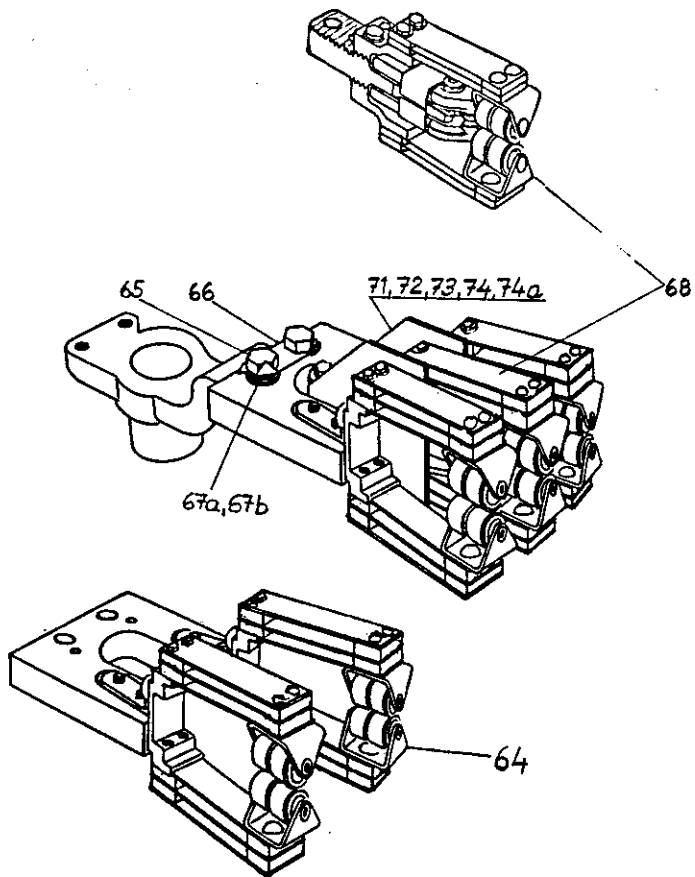


Fig. 6

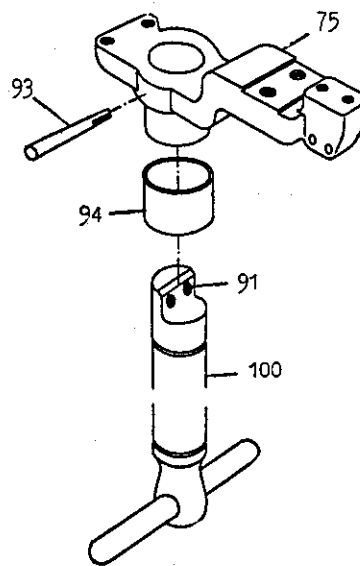


Fig. 7

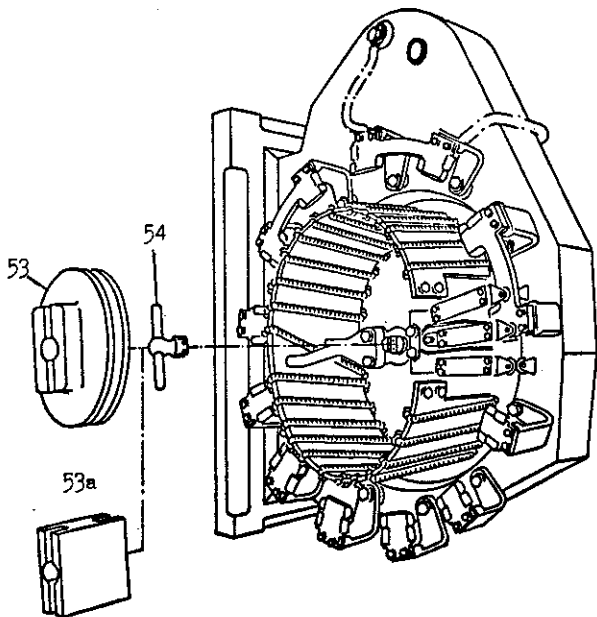


Fig. 8

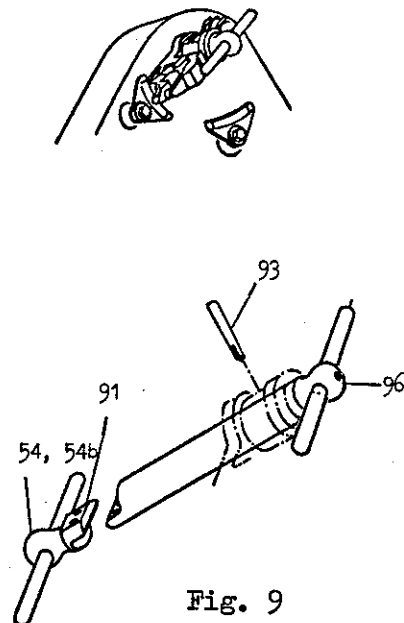


Fig. 9

D. CONTACT DETAILS AND SHAFTS

Item No.	Fig.	Name of item	Quantity per		Remark	Price code		
			tap ch	phase		200,250	350,380	550 kV
52	1, 12	Insulating shaft	1		UZCR., -D.	R 468	R 469	R 470
53	8	"	3 (1)		1) 3)	R 471	R 472	R 473
53	8	"	5 (3)		2) 3)	R 471	R 472	R 473
53a	8	Steel shaft	2		1)	R 474	R 475	R 476
54	8	Coupling	4 (2)		1) 3)	R 477	R 477	-
54	8	"	4 (2)		2) 3)	R 477	R 478	-
54	8	"	2 (2)		1) 2) 3)	-	-	R 477
54a	1, 12	"	2 (1)		1) 3)	R 479	R 479	R 480
54a	1, 12	"	2 (1)		2) 3)	R 479	R 480	R 480
54b	9	"	2 (0)		1) 2) 3)	-	-	R 478
64	6	Transition contact	3	1		R 495	R 495	R 495
65		Screw	6	2		R 496	R 496	R 496
66		Lock washer	3	1		R 497	R 497	R 497
67a		Spring washer	6	2		R 499	R 499	R 499
67b		Washer	6	2		R 500	R 500	R 500
68		Main-and switch.cont	3	1	5)	R 501	R 501	R 501
71		Insulation board	6	2		R 505	R 505	R 505
72		Screw for do.	6	2	4)	R 506	R 506	R 506
73		Washer for do	12	4	4)	R 507	R 507	R 507
74		Lock nut for do	6	2	4)	R 508	R 508	R 508
74a		Spring washer for do	6	2	4)	R 509	R 509	R 509
75		Arm	3	1		R 510	R 510	R 510
91	1, 7 9, 12	Set of: 6 Allen- -screws, 12 Locking- -washers "Nord-lock"	2 (1)	1	3)			
93	7, 9	Taper pin	6 (3)	2 (1)	3)	R 533	R 533	R 533
94	7	Contact tube	3	1		R 534	R 534	R 534
96	9	Shaft	3	1	UZCRN, DN	R 535	R 535	R 536
96	9	"	3	1	UZCRT, DT	R 535	R 536	R 536
100	7	"	3	1	UZC.N	R 537	R 537	R 538
100	7	"	3	1	UZC.T	R 537	R 538	R 538

1) Only for UZC.N

2) Only for UZC.T

3) Quantity () for UZCL

4) Replace the existing mounting details for item 71

5) Mounting details are included

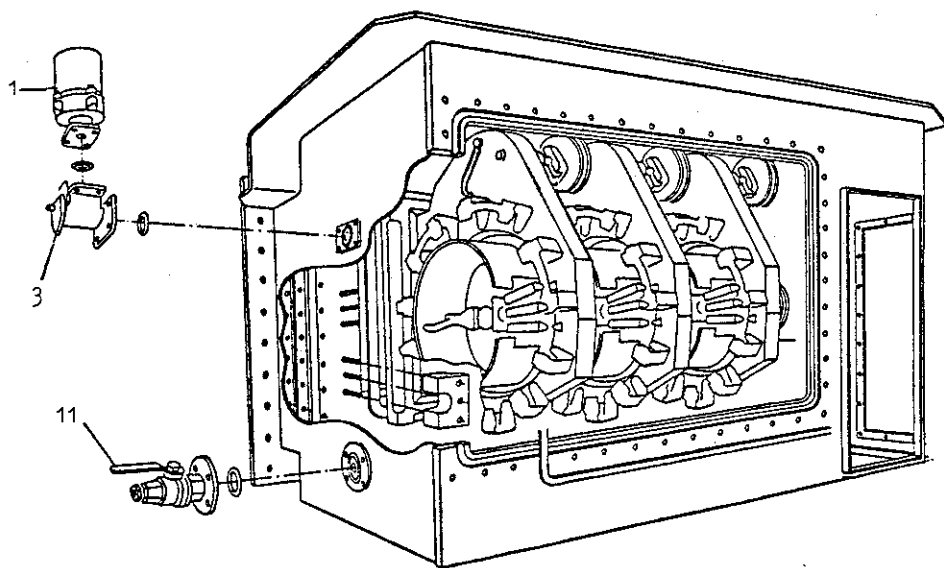


Fig. 10

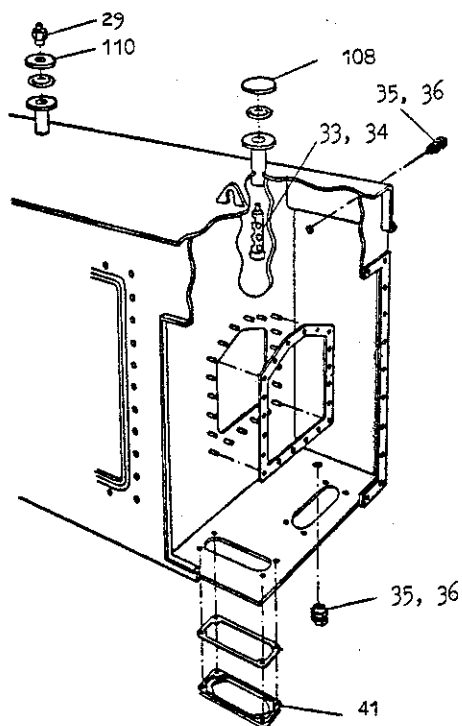


Fig. 11

E. ACCESSORIES

Item No.	Fig.	Name of item	Quantity per		Remark	Price code		
			tap ch	phase		200, 250	350, 380	550 kV
1	10	Pressure relay	1		Incl. gasket	R 410	R 410	R 410
3		Testing valve	1		"-	R 412	R 412	R 412
11a		Bottom valve	1		1)	R 422	R 422	R 422
11b		"-	1		2)	R 423	R 423	R 423
11c		"-	1		3)	R 424	R 424	R 424
11d		"-	1		4)	R 425	R 425	R 425
29	11	Air vent	1			R 453	R 453	R 453
33		Split pin	1			R 457	R 457	R 457
34		Oil filter	1			R 458	R 458	R 458
35		Air vent	2			R 459	R 459	R 459
36		Nut for do.	2			R 460	R 460	R 460
41		Cover	2			R 463	R 463	R 463
108		"	1			R 539	R 539	R 539
110		"	1			-	R 541	R 541

- 1) 11a: R1 $\frac{1}{2}$ " internal thread ASEA standard
 2) 11b: R1 $\frac{1}{2}$ " external thread with locking device according to BS
 3) 11c: 1 $\frac{1}{2}$ " NPT internal thread according to ANSI
 4) 11d: 1 $\frac{1}{2}$ " "- with testing valve

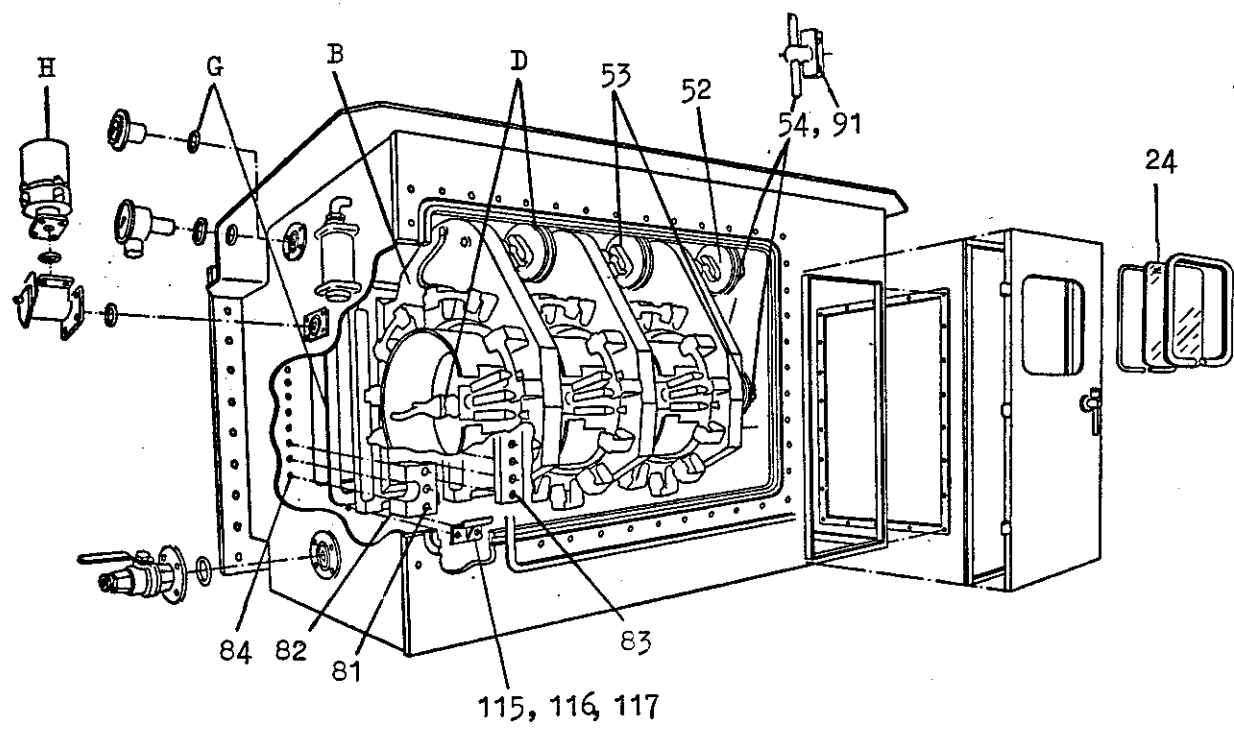


Fig. 12

F. UZC 200 KV, 250 KV, WITH STEEL BOARD

Item No.	Fig.	Name of item	Quantity per		Remark	Price code
			tap ch	phase		
B	12	Body, contacts etc.	1		See page 4, 5	
D		Contact details, shafts	1		"- 8, 9	
G		Gaskets	1		"- 14, 15	
H		Accessories	1		"- 16, 17	
24	12	Window pane			See page 2	
52		Insulating shaft			"- 8	
53		"-			"-	
54a		Coupling			"-	
81		Nut for body	40			R 520
82		Bracket for body	6			R 521
83		"-	2			R 522
84		Stud for body	40			R 543
91		Screw			See page 8	
115		Bracket	6		"-	R 544
116		Screw for do.	12			R 545
117		Thread insert	12			R 546

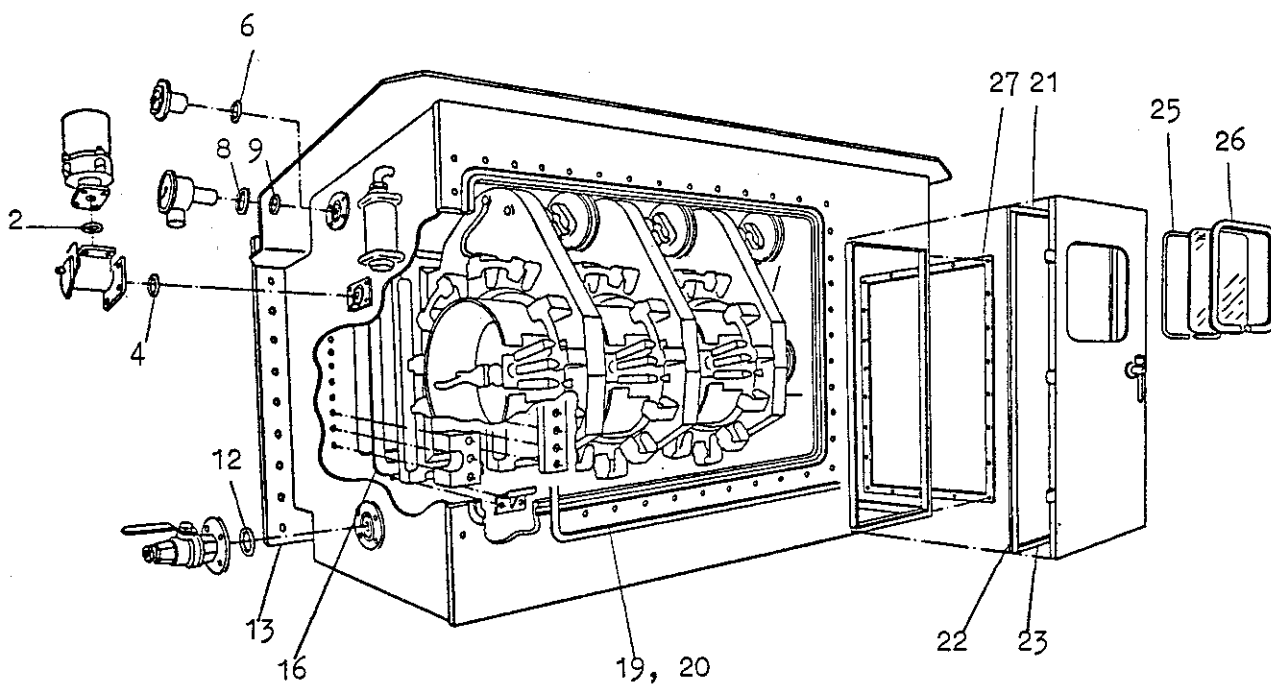


Fig. 13

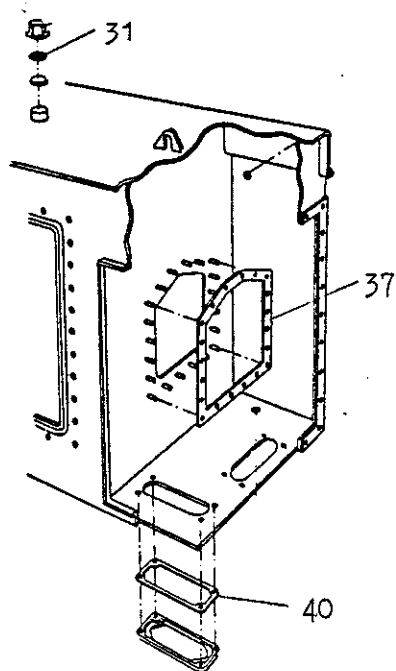


Fig. 14

G. GASKETS FOR UZC 200, 250 KV WITH STEEL BOARD

Item No.	Fig.	Name of item	Quantity per		Remark	Price code
			tap ch	phase		
2	13	Gasket for pressure r.	1		See page 6	
4		"_ testing v.	1		"_	
6		"_ oil level i	1			R 416
8		"_	1			R 419
9		"_	1			R 420
12		"_ bottom v.	1		See page 6	
13		"_ flange	1		"_	
16		"_ body	3		"_	
19		"_ cover	1		"_	
20		"_	1		"_	
21		"_ door	1		"_	
22		"_	2		"_	
23		"_	1		"_	
25		"_ window	1		"_	
26		"_	1		"_	
27		"_ cover	1		"_	
31	14	"	1			R 455
37		"	1			R 461
40		"	2			R 462

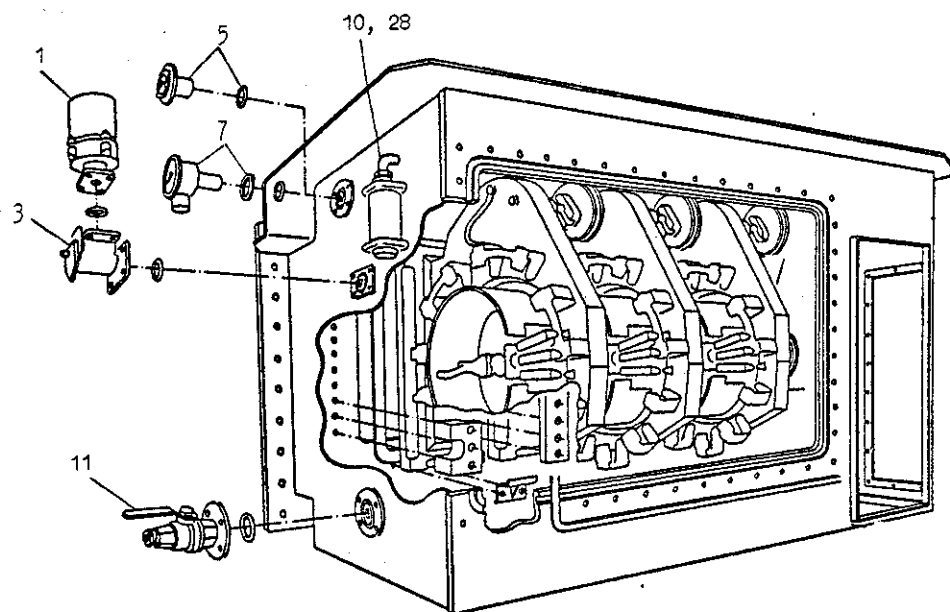


Fig. 15

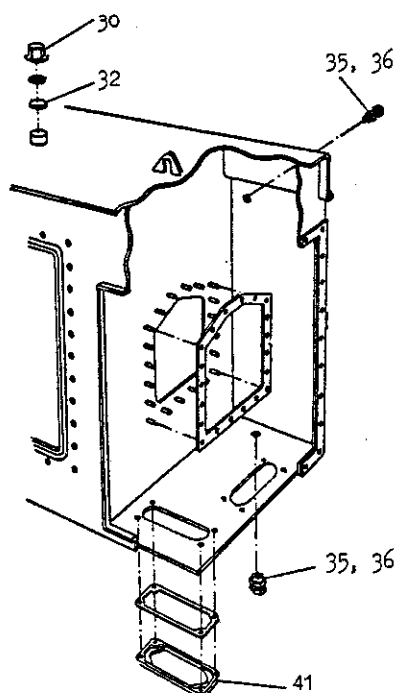


Fig. 16

H. ACCESSORIES FOR UZC 200, 250 KV WITH STEEL BOARD

Item No.	Fig.	Name of item	Quantity per		Remark	Price code
			tap	ch phase		
1	15	Pressure relay	1		See page 10	
3		Testing valve	1		"-	
5		Oil level indicator 1)	1		Incl. gasket	R 414
7		"- 2)	1		"-	R 417
10		Dehydrating breather	1			R 421
11		Bottom valve	1		See page 10	
28	16	Silicagel	1		1 kg	R 452
30		Cap	1			R 454
32		Air vent	1			R 456
35		"-	2		See page 10	
36		Nut	2		"-	
41		Cover	2		"-	

1) Without signal

2) With signal

J. RECOMMENDED SET OF SPARE PARTS

Parts for overhaul

One set consisting of the following parts for one three-phase tap-changer.

Item 19 (20)	Fig. 4	Gasket
"- 56	"- 2	Fixed contact
"- 58	"- 2	Fixed contact
"- 60,61	"- 2	Mounting details for 56,58
"- 64	"- 6	Transition contact
"- 65,66,67a,67b	"- 6	Mounting details for 64
"- 68	"- 6	Main-and switching contact (mounting details are included)